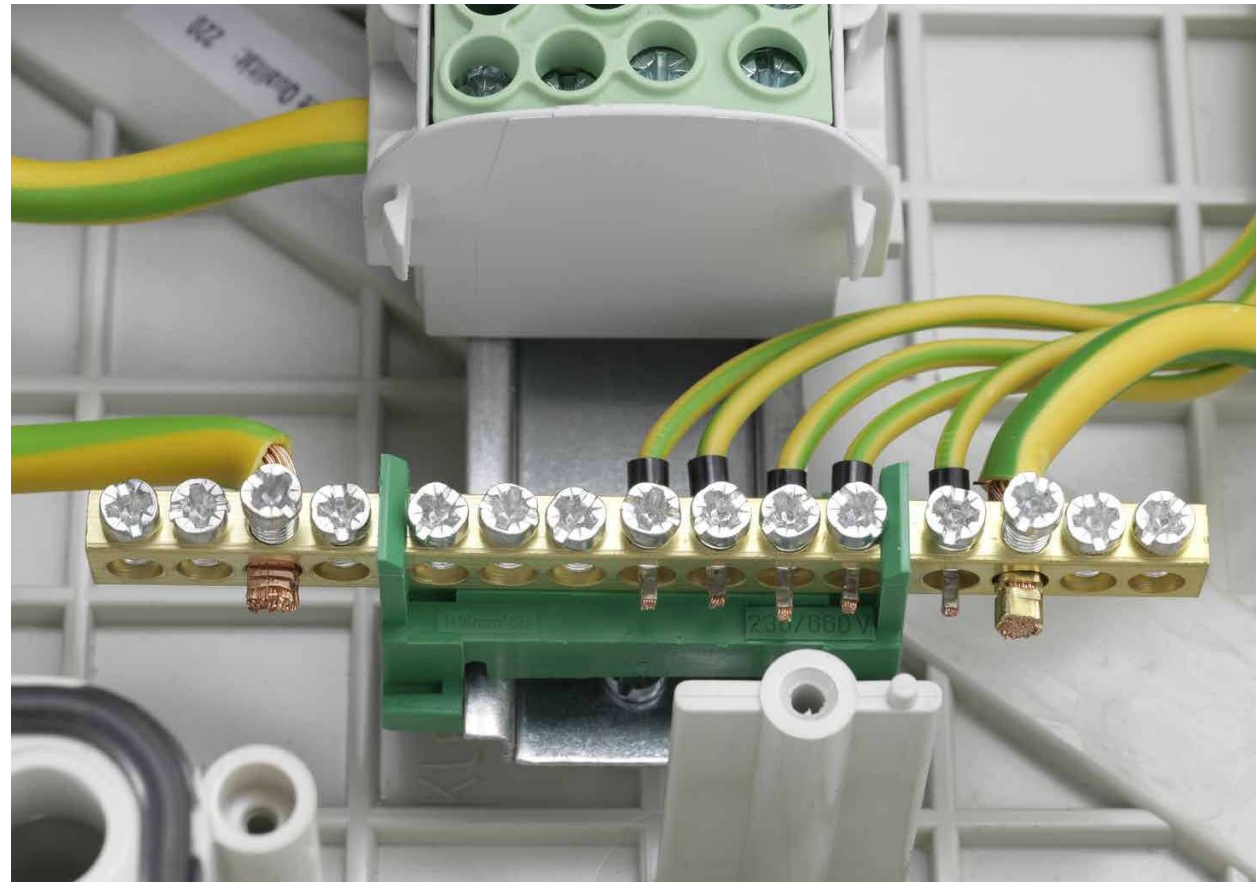




NPES

NEUTRAL CONDUCTOR RAIL (NPES)



NEUTRAL CONDUCTOR RAIL N 7



NOMINAL VOLTAGE 400 V AC
NOMINAL CURRENT 63 A

TERMINAL CROSS SECTION 7 x 16 mm²
DIMENSIONS L x W: 51 x 23 mm

Part no.	PU	GTIN /EAN	Technical Data
083320-0-4	10	405158932004	

EARTHING CONDUCTOR RAIL PE 7



NOMINAL VOLTAGE 400 V AC
NOMINAL CURRENT 63 A

TERMINAL CROSS SECTION 7 x 16 mm²
DIMENSIONS L x W: 51 x 23 mm

Part no.	PU	GTIN /EAN	Technical Data
083320-0-4	10	4051589322003	

UNIVERSAL CONDUCTOR RAIL U 7



NOMINAL VOLTAGE 400 V AC
NOMINAL CURRENT 63 A

TERMINAL CROSS SECTION 7 x 16 mm²
DIMENSIONS L x W: 51 x 23 mm

Part no.	PU	GTIN /EAN	Technical Data
083320-0-4	10	405158932002	

NEUTRAL CONDUCTOR RAIL (NPES)

NEUTRAL CONDUCTOR RAIL N 12

NOMINAL VOLTAGE
400 V AC

NOMINAL CURRENT
63 A

TERMINAL CROSS SECTION
12 x 16 mm²

DIMENSIONS
L x W: 85 x 23 mm



Part no.	PU	GTIN / EAN	Technical Data
083120-1-4	10	4051589312011	-

EARTHING CONDUCTOR RAIL PE 12

NOMINAL VOLTAGE
400 V AC

NOMINAL CURRENT
63 A

TERMINAL CROSS SECTION
12 x 16 mm²

DIMENSIONS
L x W: 85 x 23 mm



Part no.	PU	GTIN / EAN	Technical Data
083220-1-4	10	4051589322010	-

UNIVERSAL CONDUCTOR RAIL U 12

NOMINAL VOLTAGE
400 V AC

NOMINAL CURRENT
63 A

TERMINAL CROSS SECTION
12 x 16 mm²

DIMENSIONS
L x W: 85 x 23 mm



Part no.	PU	GTIN / EAN	Technical Data
083320-1-4	10	4051589332019	-

NEUTRAL CONDUCTOR RAIL N 15

NOMINAL VOLTAGE
400 V AC

NOMINAL CURRENT
63 A

TERMINAL CROSS SECTION
15 x 16 mm²

DIMENSIONS
L x W: 104 x 23 mm



Part no.	PU	GTIN / EAN	Technical Data
083120-2-4	10	4051589312028	-

EARTHING CONDUCTOR RAIL PE 15

NOMINAL VOLTAGE
400 V AC

NOMINAL CURRENT
63 A

TERMINAL CROSS SECTION
15 x 16 mm²

DIMENSIONS
L x W: 104 x 23 mm



Part no.	PU	GTIN / EAN	Technical Data
083220-2-4	10	4051589322027	-

UNIVERSAL CONDUCTOR RAIL U 15

NOMINAL VOLTAGE
400 V AC

NOMINAL CURRENT
63 A

TERMINAL CROSS SECTION
15 x 16 mm²

DIMENSIONS
L x W: 104 x 23 mm



Part no.	PU	GTIN / EAN	Technical Data
083320-2-4	10	4051589332026	-



NPES